



A Systematic Review of Consumer Behaviour Prediction Studies

Afolabi Ibukun.T¹ , Olufunke Oladipupo¹, Rowland E. Worlu²
& Akinyemi I. O¹.

¹Department of Computer and Information sciences,
Covenant University, Ota, Nigeria

²Department of Business Management,
Covenant University, Ota, Nigeria
ibukun.fatudimu@covenantuniversity.edu.ng
funke.oladipupo@covenantuniversity.edu.ng
rowland.worlu@covenantuniversity.edu.ng
ioakinyemi@covenantuniversity.edu.ng

Abstract: Due to the importance of Customer behaviour prediction, it is necessary to have a systematic review of previous studies on this subject. To this effect, this paper therefore provides a systematic review of Customer behaviours prediction studies with a focus on components of customer relationship management, methods and datasets. In order to provide a comprehensive literature review and a classification scheme for articles on this subject 74 customer behaviour prediction papers in over 25 journals and several conference proceedings were considered between the periods of 1999-2014. Two hundred and thirty articles were identified and reviewed for their direct relevance to predicting customer behaviour out of which 74 were subsequently selected, reviewed and classified appropriately. The findings show that the literature on predicting customer behaviour is ongoing and is of most importance to organisation. It was observed that most studies investigated customer retention prediction and organizational dataset were mostly used for the prediction as compared to other form of dataset. Also, comparing the statistical method to data mining in predicting customer behaviour, it was discovered through this review that data mining is mostly used for prediction. On the other hand, Artificial Neural Network is the most commonly used data mining method for predicting customer behaviour. The review was able to identify the limitations of the current research on the subject matter and identify future research opportunities in customer behaviour prediction.

Keywords: Consumer Behaviour, Prediction, Statistics, Data Mining, Dataset, Customer Relationship Management, Literature Review

1. Introduction

Consumer behaviour can be defined as the study of individuals, groups or organizations in a bid to understand the process of their selecting, securing, using and disposing the products, services, experiences or ideas (Raorane & Kulkarni, 2011). Consumer behaviour in the context of this research also includes consumer's loyalty and customer churn. Consumer loyalty can be defined, according to East et al. (2005) as repeat patronage behaviour which is the combination of attitude and behaviour. In industrial and service marketing, behavioural loyalty is viewed as retention of the brand (Reichheld 1996; Reinartz and Kumar 2000). Customer churn, also known as customer attrition or customer turnover, is the loss of existing customers to another company or service provider (Kerdprasop et al., 2013).

It is important to predict customer behaviour because; the knowledge of a customer's loyalty would be useful for improving CRM. It will also help in customer model-building process and evaluating the results of CRM-related investments (Buckinx, 2007). Furthermore, it will help to improve the success rate of acquiring customer, increasing sales and establishing competitiveness (Qiu, 2014).

There are some literature reviews in the field of customer behaviour studies which include the following: In 2009, Ngai et al., carried out an academic literature review of the application of data mining techniques to CRM. Their study was able to classify Customer Relationship Management along the following dimensions; Customer Identification, Customer Attraction,

Customer Retention and Customer Development. They also identified Association, Classification model as the most commonly used model for data mining in CRM. Brosekhan in 1995 did a review on the consumer buying behaviour to reveal two broad paradigms, the positivist and the non-positivist. The positivist paradigm encompasses the economic, behavioural, cognitive, motivational, attitudinal, and situational perspectives, while the non-positivist paradigm, envelops the interpretive and postmodern perspectives. A study to investigate the relationship between customer complaints behaviour, complaint handling mechanisms and customer loyalty was carried out by (Komunda, 2013) . It was discovered that a growing body of literature suggests that customer loyalty has positive impact on client retention.

In 2003, a systematic review on online consumer behaviour was carried out by Cheung et al., and a research framework with three key building blocks (intention, adoption, and continuance) was proposed. The findings show that factors affecting intention of buying from the web is the main focus on the existing research using TRA (Theory of Reasoned Action) and its related theories as the method. (Dahiya & Talwar, 2015) performed a state-of-art review of various methods and researches involve in churn prediction and concluded that Customer churn has been identified as a major problem in Telecom industry and aggressive research has been conducted in this by applying various data mining techniques.

Looking through all the systematic reviews in literature till now, there has not been much attention paid to review of literature on predicting consumer behaviour holistically. In order to fill this gap and because of the importance of customer behaviour prediction, this paper is carrying out a systematic review on customer behaviour prediction studies with a focus on components of customer relationship management, methods and datasets.

2. Research Questions

RQ1 Which journal is dominant in the field of customer behaviour prediction?

The main motivation for this is to discover most important customer behaviour prediction journal

RQ2: What are the datasets mostly used for customer behaviour prediction?

RQ3: What kind of datasets are the most used for customer behaviour prediction after year 2010?

The main motivation behind RQ2 and RQ3 is to discover which dataset is used to predict customer behaviour and if there is change in dataset in the most recent times.

RQ4: What kind of methods are the most used for customer behaviour prediction?

RQ5: What kind of methods are the most used for fault prediction after year 2010?

The motivation for this question is to discover trends and opportunities for prediction method focus before and after 2010

RQ6: What kind of component of CRM is focused on when performing customer behaviour prediction?

RQ7: What kind of component of CRM is focused on when performing customer behaviour prediction after year 2010?

The motivation behind this is to discover the most predicted components of CRM so that future research can explore other components.

RQ8: What is the percentage of publications published after year 2010?

RQ9. What are the limitations of current research in Customer behaviour prediction?

3. Methodology

3.1 Inclusion Criteria

Consumer loyalty can also be defined, according to (East, 2005) as repeat patronage behaviour which is the combination of attitude and behaviour. Also, Predicting churn, i.e. if a customer is about to leave for a competitor, is an important application of analysing customer behaviour (Eichinger, 2006).

Due to this definition, this systematic review on consumer behaviour prediction includes publications on predicting loyalty, churn and consumer behaviour. Therefore, the literature search was based on the descriptor, 'customer behaviour prediction', 'customer loyalty prediction' and churn prediction. Two hundred and thirty articles were identified and reviewed for their direct relevance and seventy four were subsequently selected, reviewed and classified.

Papers directly related to the search criteria was included. Position

proceedings and papers which do not include experimental results were excluded. Papers with respect to their years, datasets, customer relationship management component and method have been examined.

3.2 Classification method

The result of predicting consumer behaviour is an input to improving customer relationship management. During the review, it was discovered that the purpose of customer behaviour prediction papers falls in either one or a combination of the following dimensions of CRM; Customer Identification, Customer Attraction, Customer Retention and Customer Development. This was further validated in existing literature (Kracklauer et al., 2004), (Ngai et al., 2009). Based on this, the first classification criteria is the dimension of CRM. The second classification criterion is the dataset in which this prediction experiments were based on. Finally, the last classification criteria is the method implemented in the prediction.

3.2.1 Classification framework – CRM dimensions

The first classification framework used in this study is based on CRM dimensions. According to (Ling & Yen, 2001), the four dimensions of the CRM cycle are essential efforts to gain customer insight. Gaining customers insight on the order hand is the purpose of customer behaviour prediction. For this purpose, this review classifies papers based on their purpose, which is customer identification, attraction, retention and development.

1. Customer Identification: Customer identification also known as acquisition

has to do with targeting the population who are most likely to become customers. It includes target customer analysis and customer segmentation.

2. Customer Attraction: After the market has been segmented, customer attraction then helps organizations to direct effort and resources into attracting the target customer segments..

3. Customer Retention: Customer retention can be defined as the activity that an organization undertakes in order to reduce customer defections. To be successful, customer retention starts with the first contact an organization has with a customer and continues throughout the entire lifetime of a relationship involves loyalty programs, one to one marketing and complaints management (Singh, & Khan, 2012) (Ngai et al., 2009).

4. Customer development is the consistent expansion of transaction intensity, transaction value and individual customer profitability. IT involves Customer lifetime value, up/cross selling and market basket analysis(Ngai, 2009).

3.2.2 Classification framework – Implementation method

The classification framework-implementation method contains 10 categories which is described below.

Statistics: In this research, this classification group is contains techniques such as auto regression, logistic regression, linear regression, structural equation modelling and so on.

Clustering: K means clustering mostly used in this category works as follows; given a set of points in a Euclidean space and a positive integer k (the number of clusters), K means split the

points into k clusters so that the total sum of the (squared Euclidean) distances of each point to its nearest cluster center is minimized (Lloyd., 1982)

Classification: This includes the following: Naïve Bayes; Bayesian classifiers assign the most likely class to a given example described by its feature vector (Rish, 2001).

Bayesian Network, Decision Tree (DT), Support Vector Machine (SVM) are all components of the classification category.

Psychological prediction Models: These classifications involve the group of prediction models which has its foundation in the psychological field of study.

boosting algorithms: The boosting algorithms used in this classification includes Real AdaBoost, Gentle AdaBoost and Modest AdaBoost (Shao et al, (2007)

Particle Swarm Optimization used in this classification is an evolutionary data mining technique (Liu and Chen (2012).

Neuro-Fuzzy: This classification is a combination of neural network and fuzzy logic technique in data mining.

Graph Mining Technique: Graph mining is a technique used to extract characteristic patterns from a variety of graph structured data (Inokuchi, 2002).

The remaining category in the method classification includes Artificial Neural Network (ANN) and Association Rule Mining,

3.2.3 Classification framework –

Dataset

One of the greatest threat to the validity of customer behaviour prediction studies nature of data used for the prediction.

The Classification framework using Dataset is based on the following sources of the dataset used for the experiment.

1. Questionnaire survey
2. Public data repository
3. Organisational data
4. Unknown (not stated by the author)

Questionnaire survey: This includes data gotten by the researchers conduction a questionnaire survey or interview of the individual or environment researched.

Public data repository: this includes commercially available public data, publicly downloaded data

Organisational data: this contains data collected from an organizational database, organisational information system, for example, their website log details etc. it also includes company transactional data, data purchased from a company.

3.3 Threats to Validity

The authors of this review paper are academic researchers in the field of data mining, text mining, customer relationship management and marketing. They have also published paper in the mentioned field.

There was no bias in choosing the papers reviewed. The papers were not searched based on issue-by-issue or manual reading of titles of all published papers in journals, but based on the following steps

1. Online database search.
2. Initial classification by first researcher.

3. Independent verification of classification results by second researcher;
4. Final verification of classification results by third researcher and fourth researcher.

Conference papers were not excluded because it contains experience reports. are mostly published in conference proceedings.

4.0 Results

53 journal papers out the 74 papers reviewed were journals and the rest includes conference proceedings, white paper, manuscript, advance science and technology letters. Publication years of papers are between year 1992 and 201. Fig. 4.1 is a bar chart of publication year on the x-axis and the number of papers published in that year on the y-axis for papers in review. 72 %percentage of papers are journal papers and the rest fall within 28%.

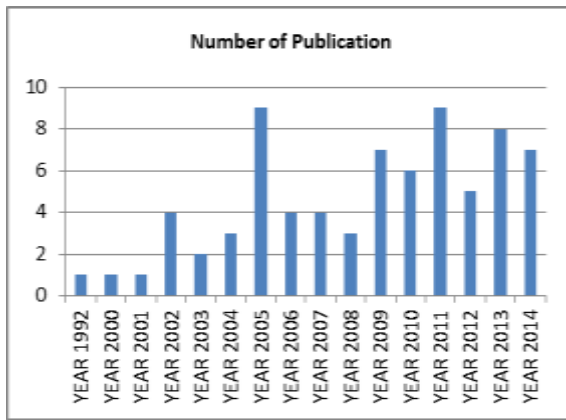


Figure 4.1

The research questions is being addressed by the following section respectively
 4.1 Which journal is dominant in the field of customer behaviour prediction?

Table 4.1 Most important customer behaviour prediction journals.

Rank	Journal	Number	Proportion
1	Elsevier Journal (Expert system with applications)	17	20%
2	Advanced Science and Technology Letters	2	3%
2	International Journal of Computer Applications	2	3%
2	European Journal of Operational Research	2	3%

According to the table above, the most dominant journal gotten from the review literatures is the Expert Systems with Applications journal. This journal has been consistently publishing customer behaviour prediction articles as featured in the review between 2005 and 2011.

4.2 What are the datasets mostly used for customer behaviour prediction?

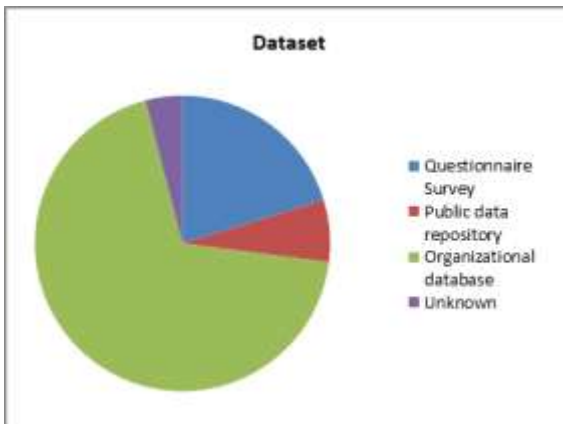


Figure 4.2

According to the pie chart in Figure 4.2, the Organizational database(69%) has been the main source of data for customer behaviour prediction since 1992, followed by the data gotten from the questionnaires administered to relevant respondents(20%). Public data repository (7%) is not often used, this is due to the nature of the prediction focus.

Customer behaviour prediction system is always interested in using data that is directly related to the organization in question.

4.3 What kind of datasets are the most used for customer behaviour prediction after year 2010?

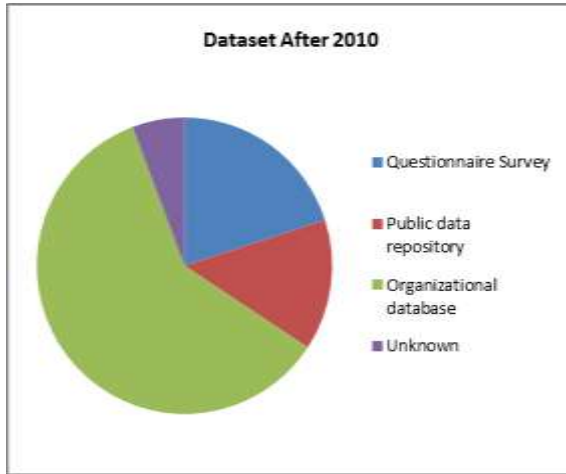


Figure 4.3

Figure 4.3 also shows a consistency in the type of dataset used for customer behaviour prediction. The organisational dataset (60%) does not loose its value for prediction purposes in recent times i.e. between 2010 till date.

4.4. What kind of methods are the most used for customer behaviour prediction?

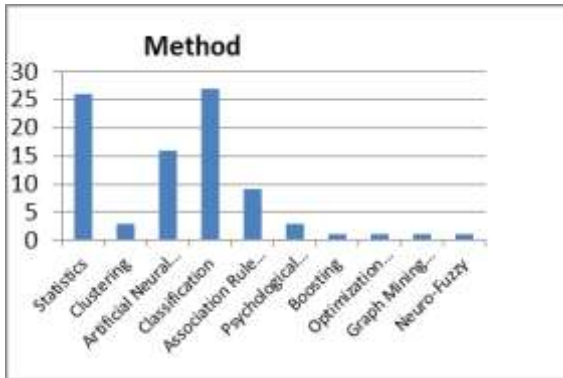


Figure 4.4 Bar chart of number of publications against method.

Form figure 4.4 above, classification technique (combination of Support Vector Machine (SVM), Naïve Bayes, Bayesian Network and Decision Tree (DT) is the prediction method with the highest count, followed by statistics in the prediction method, it should also be noted that statistics is a combination of auto regression, linear regression, structural equation modelling and logistic regression. Comparing figure 4.4.

with figure 4.5, it is observed that the trend in which the method is being adopted still remains the same even after the year 2010.

Table 4.2

Method	Method(Details)	References
Statistics	auto regression, linear regression, structural equation modelling, Logistic Regression	Vijayalakshmi et al,(2013,Ngamkroeckjoti et al, (2011)Sharad et al, (2010), Khan, (2012), Sadasivan et al, (2011),Barrios and Lansangan (2012),Banerjee and Pawar (2013) Baumann et al, (2006), Hamilton-Gibbs et al, (1992) Keiningham et al, (2007),Yang et al, (2011) Sandy et al, (2013) , Flint et ak, (2010) Rauyruen and Miller (2007), Coussement et al (2010)b, Teo andYeong (2003), Poel (2003) Mauser et al,(2004), Coussement et al, (2010) Thorleuchter et al, (2012), Malmarugan (2008). Glady (2006), Clemente et al, (2010) Buckinx et al, (2002) Buckinx (2005), Coussement and Poel (2009)
Clustering	k means clustering	Vijayalakshmi et al,(2013) Hosseini et al.,2010, Liu and Chen (2012)
Artificial Neural Network (ANN)		Abbasimehr et al, (2014),Mauser et al,(2004), Sharma and Panigrahi (2011) Buckinx et al, (2007),Zheng et al, (2012) Aghaie (2009). , Zhang et al, (2008) Shaaban et al, 2014, Glady (2006) Clemente et al, (2010) Buckinx et al, (2002) Hsieh and Chu (2009). Yan et al 2005, Buckinx (2005) Cho et al,(2005),Baesens et al, (2002)
Classification	Support Vector Machine (SVM)	Abbasimehr et al, (2014) Coussement and Poel (2008) Zheng et al, (2012) Qiu (2014) ShaCoussement and Poel (2009)Aban et al, 2014
	Naïve Bayes	Kirui et al,(2013),Mauser et al,(2004),Buckinx et al, (2002)
	Bayesian Network	Kirui et al,(2013),Qiu (2014)

	Decision Tree (DT)	D’Haen et al,(2013),Abbasimehr et al, (2014), Wei and Chiu (2002), Rho J. J., (2004), Shaaban et al, 2014, Eichinger et al, (2006), Glady (2006) Clemente et al, (2010), Miller et al (2009) Gang et al,, (2011) Hsieh and Chu (2009). Buckinx et al, (2007), Larivie`re and Poel (2005) Burez and Poel (2009) Mu et al, (2013) Buckinx (2005)
Association Rule Mining	Apriori Algorithm, market base analysis etc	Haastrup et al,(2014), Zhang and Zhao (2014),Raorane and Kulkarni (2011),Qiu (2014), Chen et al, (2005),Kerdprasop et al, (2013), Giudiciand Passerone (2002) Haastrup et al,(2014) Verbeke et al, (2011)
Psychological Prediction Model		Taubinsky (2013) Ibrahim and Vignali (2005) Carvalho
Boosting	boosting algorithms	Shao et al, (2007)
Optimization Technique	Particle Swarm Optimization	Liu and Chen (2012)
Graph Mining Technique		Yada et al,(2005)
Hybrid of Clustering and Fuzzy Logic	Neuro-Fuzzy	Abbasimehr et al, (2011)

4.5 What kind of methods are the most used for customer behaviour prediction after year 2010?

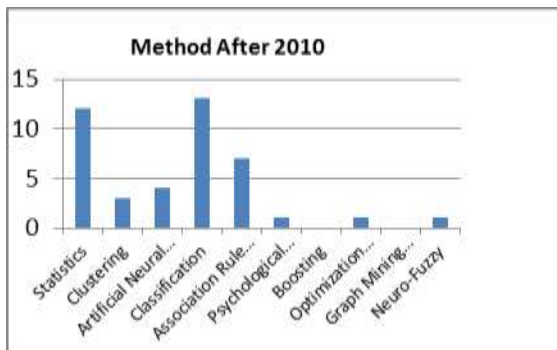


Figure 4.5 Bar chart of number of publications against method after year 2010

In order to have a detailed explanation of the references of the methods described in figure 4.4 and 4.5, Table 4.2 list the methods discovered from the review against the reference of the publications which used this method. This classification is based on their application in the reviewed publication. In table 4.2, the classification techniques can be broken down to Support Vector Machine (SVM) with 5 publications, Naïve Bayes with 3 publications, Bayesian network with 2 publications and Decision Tree (DT) with 11 publications.

4.6 What kind of component of CRM is focused on when performing customer behaviour prediction?

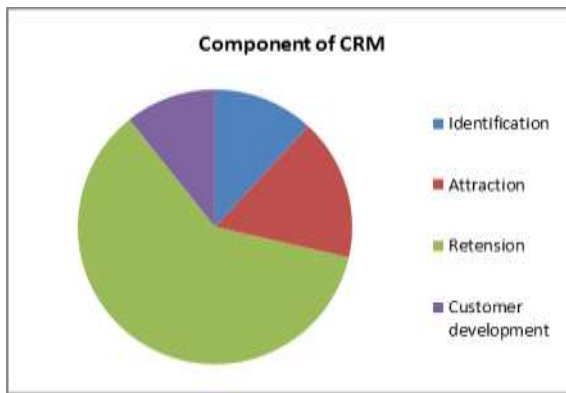
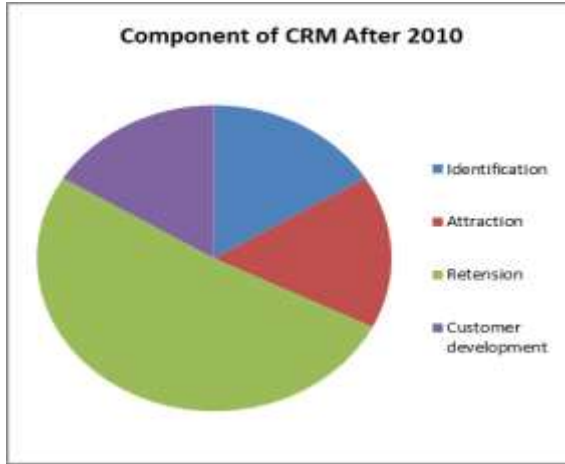


Figure4.6

From Figure 4.6, it is obvious that the most predicted component of customer relationship management is retention (60%). This shows that organizations spend more resources in researching to retain customers, because this contributes directly to their profit. Even after the year 2010, Figure 4.7, retention (51%) is still the most researched component of CRM. As from 2010 onwards, the identification (from 12% to 16%) and customer development (11% to 16%) component of CRM is seen to gain more focus.

4.7 What kind of component of CRM is focused on when performing customer behaviour prediction after year 2010?



4.8 What is the percentage of publications published after year 2010?

In this review, the percentage of publications used which their publication year falls between the year 2010 and 2014 is 47%.

4.9 What are the limitations of current research in Customer behaviour prediction?

The limitation of the current research, which gives opportunity for future research in customer behaviour prediction, includes the following;

- There is need to continuously explore new mining methods, in order to make prediction models more precise and more informative (Yihua et al., 2014).
- Using k-means approach for predicting customer behaviour still requires an extensive evaluation in order to detect if there is over fitting by means of cross validation or bootstrap methodologies (Vijayalakshmi et al, 2013)
- There remains unexplored aspects of churn prediction which has to do

with prediction when possible churners are likely to quit, also there is need to improve the prediction rates. Also in churn prediction, there is need to solve the class imbalance problem, where the class we are interested in, is the minority (Kirui et al, 2013)

- Also, there is need for further research in investigating whether web data can be implemented in customer acquisition models (D'Haen et al, 2013)
- Lastly, there is need to make the customer acquisition process more targeted by integrating more textual information in the prediction process(Thorleuchter et al, 2012).

5. Conclusion

In this study, a comprehensive systematic review and analysis of paper published in journals and conference proceedings in the area of customer behaviour prediction for 15 years were conducted. The aim was to provide a

comprehensive literature review and a classification scheme for articles on this subject base on customer relationship management, methods and datasets. Through the review the following were observed:

- Research on predicting customer behaviour is ongoing and is of most importance to organisation.
- Most studies investigated customer retention prediction and this was done mostly using organizational data as dataset for prediction.
- Also, data mining methods were used more often in predicting customer behaviour, as compare to the

References

- Brosekhan A. A(1995) Consumer Buying Behaviour – A Literature Review *in*Journal of Business and Management (IOSR-JBM), PP 08-16
- Buckinx W., Verstraeten G., Van den Poel D, Predicting customer loyalty using the internal transactional database. *Expert Systems with Applications* 32 (2007).
- Reichheld, F.F., 1996. *The Loyalty Effect*. Boston: Harvard Business School Publications.
- Cheung, C. M. K.; Zhu, L.; Kwong, T.; Chan, G. W. W.; and Limayem, M. Online Consumer Behavior: A Review and Agenda for Future research. In Wigand, R. T.; Tan, Y.-H.; Gricar, J.; Pucihar, A.; Lunar, T. (eds.), *Proceedings of the 16th BLED eCommerce Conference*. Kranj: Modernaorganizacija, 2003, 194-218.
- statistical approaches and the most commonly used data mining method is Artificial Neural Network.
- The above observations imply a very rich research opportunity in the area of customer behaviour prediction and also, reflect a good relationship between the research community and industries. To this effect, this study identified limitations of current researches on the customer behaviour prediction studies and identifies future research opportunities.
- East, R., Gendall, P., Hammond, K., & Wendy, L. (2005). Consumer loyalty: Singular, addictive or interactive? *Australian Marketing Journal*, 13(2), 10–26.
- Inokuchi, A., Washio, T., Nishimura, Y., Motoda, H.: General Framework for Mining Frequent Structures in Graphs. *Proc. of the International Workshop on Active Mining*. (2002) 23-30.
- Kerdprasop N., Kongchai P. and Kerdprasop K., “Constraint Mining in Business Intelligence: A Case Study of Customer Churn Prediction”, *International Journal of Multimedia and Ubiquitous Engineering*, vol. 8, no. 3, (2013).
- KiranDahiya and (2015) KanikaTalwarCustomer Churn Prediction in Telecommunication Industries using Data Mining Techniques- A Review *in*International Journal of Advanced Research in Computer Science and Software

- Engineering Volume 5, Issue 4, pp417-433
- Komunda M (2013). Customer Complaints Behaviour, service recovery and behavioural intentions: Literature review. *Int. J. Bus. Behav. Sci.* 3(7):1-29.
- Kracklauer, A. H., Mills, D. Q., & Seifert, D. (2004). Customer management as the origin of collaborative customer relationship management. *Collaborative Customer Relationship Management - taking CRM to the next level*, 3–6.
- Ling, R., & Yen, D. C. (2001). Customer relationship management: An analysis framework and implementation strategies. *Journal of Computer Information Systems*, 41, 82–97.
- Lloyd S.P. Least squares quantization in PCM. Unpublished Bell Lab. Tech. Note, portions presented at the Institute of Mathematical Statistics Meeting Atlantic City, NJ, September 1957. Also, *IEEE Trans Inform Theory* (Special Issue on Quantization), vol IT-28, pages 129-137, March 1982
- Ngai, E. W. T., Xiu, L., and Chau, D. C. K. (2009). Application of data mining techniques in customer relationship management: A literature relationship and classification. *Expert Systems with Applications*, 36, 2529-2602
- Qiu J., Predictive Model for Customer Purchase Behavior in E-Commerce Context in the Proceedings of Pacific Asia Conference on Information Systems (PACIS)(2014)
- Raorane A. & Kulkarni R.V, "Data Mining Techniques: A Source for Consumer Behavior Analysis," Shahu Institute of business Education and Research, pp. 1-15, 2011.
- Reinartz, W., Kumar, V., 2000. On the profitability of long-life customers in a non-contractual setting: an empirical phase and implications for marketing. *Journal of Marketing* 64 (4), 17-36.
- Rish.I An empirical study of the naive bayes classifier. In Proceedings of IJCAI-01 workshop on Empirical Methods in AI, International Joint Conference on Artificial Intelligence, 2001, pages 41–46. American Association for Artificial Intelligence. Online available <http://www.cc.gatech.edu/~isbell/classes/reading/papers/>
- Singh, R., & Khan, I. A. (2012). An approach to Increase customer retention and loyalty in B2C world. *International Journal of Scientific and Research Publications* Volume 2, Issue 6,

Appendix A. Papers on Customer Behaviour Prediction in Review

1. Vijayalakshmi S., Mahalakshmi V., and Magesh S., (2013). "Knowledge discovery from consumer behavior in electronic home appliances market in Chennai by using data mining techniques" in *African Journal of Business Management* Vol. 7(34), pp. 3332- 3342
2. D'Haen J., Van den Poel D., and Thorleuchter D., (2013). "Predicting customer profitability

- during acquisition: Finding the optimal combination of data source and data mining technique” in *Expert Systems with Applications* 40 (2013) 2007–2012
3. Kirui C., Hong L., Cheruiyo W., and Kirui H., (2013). “Predicting Customer Churn in Mobile Telephony Industry Using Probabilistic Classifiers in Data Mining” in *IJCSI International Journal of Computer Science Issues*, Vol. 10, Issue 2, No 1
 4. Abbasimehr H., Setak M., and Tarokh M., (2014). “A Comparative Assessment of the Performance of Ensemble Learning in Customer Churn Prediction” in *The International Arab Journal of Information Technology*, Vol. 11, No. 6
 5. Yihua Z., Yuan W., Chunfang H., and TingTing Y., (2014). “Customer Loyalty Prediction Model and System Design Based On Securities Company” in *Advanced Science and Technology Letters* Vol.53 ISSN: 2287-1233 ASTL
 6. A. Mauser, I. Bezrukov, T. Deselaers, D. Keysers. Predicting Customer Behavior using Naive Bayes and Maximum Entropy – Winning the Data-Mining-Cup, 2004. Proc. Informatiktage 2005 der Gesellschaft für Informatik, in press, St. Augustin, Germany, April 2005.
 7. K. Coussement, D.F. Benoit, D. Van den Poel Improved marketing decision making in a customer churn prediction context using generalized additive models *Expert Systems with Applications*, 37 (3) (2010), pp. 2132–2143
 8. Hastrup A. V., Oladosu O. A., Okikiola F. M., Oladiboye O. E., and Ishola P. E., (2014). “Customer behaviour analytics and data mining” in *American Journal of Computation, Communication and Control* 2014; 1(4): 66-74
 9. Coussement K. and Van den Poel D. (2008) Churn prediction in subscription services: An application of support vector machines while comparing two parameter-selection techniques in *Expert Systems with Applications* 34, Pg 313 - 327
 10. Sharma A., and Panigrahi P. K., (2011). “A Neural Network based Approach for Predicting Customer Churn in Cellular Network Services” in *International Journal of Computer Applications* (0975 – 8887) Volume 27– No.11
 11. Buckinx W., Verstraeten G., and Van den Poel D., (2007). “Predicting customer loyalty using the internal transactional database” in *Expert Systems with Applications* 32, 125–134
 12. Gézáné H., (). “Prediction Of Customers’ Loyalty And Market Share By Using Markov Chain Model”
 13. Taubinsky, D. (2013), ‘From intentions to actions: A model and experimental evidence of inattentive choice’, working paper
 14. Ngamkroekjoti C., Lou X. B., and Kijboonchoo T., (2011). “Determinant Factors of Purchase Intention: A casestudy of

- imported wine in city of Hangzhou". In International Conference on Management, Economics and Social Sciences , 591-595
15. Zheng B., Thompson K., Lam S.S., and Yoon W. S., (2012). "Customers' Behaviour Prediction Using Artificial Neural Network" in Proceedings of the 2013 Industrial and Systems Engineering Research Conference A. Krishnamurthy and W.K.V. Chan, eds.
 16. Zhang Y., and Zhao Z., (2014). "Study on Consumer Behavior Predict in E-commerce Based on Multi-Agent" in International Journal of u- and e- Service, Science and Technology Vol. 7, No. 6 (2014), pp. 403-412
 17. Chang C. W., Lin C. T., and Wang L. Q., (2009). "Mining the text information to optimizing the customer relationship management" in Expert Systems with Applications 36, 1433–1443
 18. Thorleuchter D., Van den Poel D., and Prinzie A., (2012). "Analyzing existing customers' websites to improve the customer acquisition process as well as the profitability prediction in B-to-B marketing" in Expert Systems with Applications 39, 2597–2605
 19. Wei C. P., and Chiu I. T., (2002). "Turning telecommunications call details to churn prediction: A data mining approach". Expert Systems with Applications, 23, 103–112.
 20. Goel, Sharad, Jake M. Hofman, Sébastien Lahaie, David M. Pennock, and Duncan J. Watts. 2010. "Predicting Consumer Behavior with Web Search." PNAS 107(41).
 21. Khan I., (2012). "Impact of Customers Satisfaction And Customers Retention on Customer Loyalty" in International Journal of Scientific & Technology Research Volume 1, Issue 2
 22. A. Raorane & R.V. Kulkarni, "Data Mining Techniques: A Source for Consumer Behavior Analysis," Shahu Institute of business Education and Research, pp. 1-15, 2011.
 23. Aghaie A., (2009). "Measuring and Predicting Customer Lifetime Value in Customer Loyalty Analysis: A Knowledge Management Perspective (A Case Study on an e-Retailer)" in International Journal of Industrial Engineering & Production Research Volume 20, Number 1 & 2, pp. 21-30
 24. Larivière B., and Van den Poel D., (2005). "Predicting customer retention and profitability by using random forests and regression forests techniques" in Expert Systems with Applications 29, 472–484
 25. Hosseini S. M., Maleki A., and Gholamian M. R., (2010). "Cluster analysis using data mining approach to develop CRM methodology to assess the customer loyalty" in Expert Systems with Applications 37, 5259–5264
 26. Malmarugan D., (2008). "Strategic model for predicting customer's intention to purchase

- apparel online” in *Innovative Marketing*, Volume 4, Issue 1
27. Burez J., D. and Van den Poel D., (2009). “Handling class imbalance in customer churn prediction” in *Expert Systems with Applications* 36, 4626–4636
 28. Zhang Y., Wang Y., He C. and Yang T.(2014) Customer Loyalty Prediction Model and System Design Based On Securities Company in *Advanced Science and Technology Letters* Vol.53 (AITS 2014), pp.389-392
 29. Verbeke W., Martens D., Mues C., and Baesens B., (2011). “Building comprehensible customer churn prediction models with advanced rule induction techniques” in *Expert Systems with Applications* 38, 2354–2364
 30. Sadasivan K., Rajakumar S., & Rajnikanth, R., (2011). “Role of Involvement and Loyalty in Predicting Buyer’s Purchase Intention towards Private Apparel Brand Extensions” in *International Journal of Innovation, Management and Technology*, 2(6), 519-524.
 31. Qiu, Jiangtao, "A PREDICTIVE MODEL FOR CUSTOMER PURCHASE BEHAVIOR IN E-COMMERCE CONTEXT" (2014). *PACIS 2014 Proceedings*. Paper 369.
 32. BarriosE. B. and Lansangan J.R.G., (2012). “Forecasting Customer Lifetime Value: A Statistical Approach” in *Philippine Management Review* 2012, Vol. 19
 33. Rho J. J., (2004). “ Internet Customer Segmentation Using Web Log Data” in *Journal of Business & Economics Research* Volume 2, Number 11
 34. Banerjee S., and Pawar S., (2013). “Predicting Consumer Purchase Intention: A Discriminant Analysis Approach” in *NMIMS Management Review* Volume XXIII, page 129
 35. Baumann C., Burton S., Elliott G., and Kehr H. M., (2006). “Prediction of attitude and behavioural intentions in retail banking” in *International Journal of Bank Marketing* Vol. 25 No. 2, 2007 pp. 102-116
 36. Shao Jinbo, Li Xiu, and Liu Wenhua (2007), “The Application of AdaBoost in Customer Churn Prediction,” In *Proceedings of Service Systems and Service Management, 2007 International Conference on*, pp.1-6
 37. Zhang T., Yuan B., and Liu W., (2008). “Predicting Credit Card Customer Loyalty Using Artificial Neural Networks”
 38. Shaaban E., Helmy Y., Khedr A., and Nasr M., (2012). “A Proposed Churn Prediction Model” in *International Journal of Engineering Research and Applications (IJERA)* ISSN: 2248-9622 www.ijera.com Vol. 2, Issue 4
 39. Frank Eichinger, Detlef D. Nauck, and Frank Klawonn. Sequence Mining for Customer Behaviour Predictions in Telecommunications. In Markus Ackermann, Carlos Soares, and Bettina Guidemann, editors, *Proceedings 122 of the Workshop*

- on Practical Data Mining at ECML/PKDD, pages 3–10, Berlin, Germany, September 2006.
40. Liu J. L., and Chen C. L., (2012). “Application of Evolutionary Data Mining Algorithms to Insurance Fraud Prediction” in Proceedings of 2012 4th International Conference on Machine Learning and Computing IPCSIT vol. 25
 41. Ibrahim Y., and Vignali C., (2005). “Predicting Consumer Patronage Behaviour in the Egyptian Fast Food Business” in Innovative Marketing, Volume 1, Issue 2
 42. Carvalho, C.A. (nd) Impact of Consumer Attitude in Predicting Purchasing Behaviour. Online Available at: <http://www.iaso.com.br/pdf/Impact%20of%20Consumer%20Attitude%20in%20Predicting%20Purchase%20Behaviour.pdf> Accessed 3 July 2015
 43. Mu J., Xu L., Duan X., and Pu H., (2013). “Study on Customer Loyalty Prediction Based on RF Algorithm” in Journal of Computers, VOL. 8, NO. 8
 44. Glady, N, Baesens, B. and Croux C., 2006 Modeling Customer Loyalty using Customer Lifetime Value. Available at SSRN: <http://ssrn.com/abstract=968584>
 45. M. Clemente, V. Giner-Bosch, and S. San Matías, “Assessing classification methods for churn prediction by composite indicators,” Manuscript, Dept. of Applied Statistics, OR & Quality, Universitat Politècnica de València, Camino de Vera s/n, 46022 Spain, 2010.
 46. Miller H., Clarke S., Lane S., Lonie A., Lazaridis D., Petrovski S., and Jones O., (2009). “Predicting customer behaviour: The University of Melbourne’s KDD Cup report” in JMLR: Workshop and Conference Proceedings 7: 45-55
 47. Chen, M. C., Chiu, A. L., and Chang, H. H., (2005). “Mining changes in customer behavior in retail marketing” in Expert Systems with Applications 28 , 773-781
 48. Hamilton-Gibbs D., Esslemont D., and McGuinness D., (1992). “Predicting the Demand for Frequently Purchased Items” in Marketing Bulletin 3, 18-23, Article 3
 49. Keiningham T. I., Cooil B., Aksoy L., Andreassen T.W., and Weiner J., (2007). “The value of different customer satisfaction and loyalty metrics in predicting customer retention, recommendation, and share-of-wallet” in Managing Service Quality Vol. 17 No. 4, 2007 pp. 361-384
 50. Rajagopal S., (2011). “Customer Data Clustering Using Data Mining Technique” in International Journal of Database Management Systems (IJDMS) Vol.3, No.4
 51. Yang H. C., Liu C., and Zhou L., (2011). “Predicting young Chinese consumers’ mobile viral attitudes, intents and behavior” in Asia Pacific Journal of Marketing and Logistics Vol. 24 No. 1, 2012 pp. 59-77

52. Sandy, C. J., Gosling, S. D., and Durant, J. (2013). Predicting Consumer Behavior and Media Preferences: The Comparative Validity of Personality Traits and Demographic Variables. *Psychology & Marketing*.
53. Gang Lu, Peng Lu and Xiufei Qi (2011) Customer Loyalty Prediction and Implementation using Data Mining in Proceedings of International Conference on Computer Science and Service System (CSSS), 3120 – 3123
54. Buckinx, W., Baesens, B., den Poel, D., van Kenhove, P., Vanthienen, J.: Using Machine Learning Techniques to Predict Defection of Top Clients. In: Proc. 3rd International Conference on Data Mining Methods and Databases. (2002) 509–517
55. Hsieh, N.C., & Chu, K.C. (2009). Enhancing Consumer Behavior Analysis by Data Mining Techniques. *International Journal of Information and Management Sciences* 29 , 39-53.
56. Yan, L., Miller, D. J., Mozer, M. C., & Wolniewicz, R. (2001). Improving prediction of customer behavior in nonstationary environments. In *Proc. of Intl. Joint Conf. on Neural Networks*, pp. 2258-2263.
57. Yan, L.; Fasson, M. & Baldasare, P. (2005). Predicting customer behavior via calling links, *Proceedings of Int. Joint Conference on Neural Networks*, pp. 2555-2560, Montreal, Canada, 2005.
58. Buckinx, W., & Poel, D. V. D. (2005). Customer base analysis: Partial defection of behaviorally-loyal clients in a non-contractual FMCG retail setting. *European Journal of Operational Research*, 164, 252–268.
59. Xie, Y. Li, X. Ngai, E. Ying, W., 2009. Customer churn prediction using improved balanced random forests, *Expert Systems with Applications* 36, 5445–5449.
60. Flint D. J., Blocker C. P., and Boutin P. J., (2010). “Customer value anticipation, customer satisfaction and loyalty: An empirical examination” in *Industrial Marketing Management* 40 (2011) 219–230
61. Rauyruen P., Miller K.E. (2007) Relationship quality as a predictor of B2B customer loyalty in *Journal of Business Research* 60 (2007) 21–31
62. Coussement K., and Van den Poel D., (2009). “Improving customer attrition prediction by integrating emotions from client/company interaction emails and evaluating multiple classifiers” in *Expert Systems with Applications* 36 (2009) 6127–6134
63. Chu B. H., Tsai M. S., and Ho C. S., (2006). “Toward a hybrid data mining model for customer retention” in *Knowledge-Based Systems* 20, 703–718
64. Cho Y. B., Cho Y. H., and Kim S. H., (2005). “Mining changes in customer buying behavior for collaborative recommendations” in *Expert Systems with Applications* 28 , 359–369

65. Coussement, K., Benoit D. F., and Van den Poel D., (2010)b. "Improved marketing decision making in a customer churn prediction context using generalized additive models" in *Expert Systems with Applications* 37, 2132–2143
66. Kerdprasop N., Kongchai P., and Kerdprasop K., (2013). "Constraint Mining in Business Intelligence: A Case Study of Customer Churn Prediction" in *International Journal of Multimedia and Ubiquitous Engineering* Vol. 8, No. 3
67. Yada, K., Motoda, H., Washio, T. and Miyawaki, A.: Consumer behavior analysis by graph mining technique, *New Mathematics and Natural Computation*, 2 (2005)(1), 59-68.
68. Teo T.S.H., and Yeong Y. D., (2003). "Assessing the consumer decision process in the digital marketplace" in *Omega International Journal of Management Science* 31, 349 – 363
69. Abbasimehr H., Setak M. and Tarokh M.JA Neuro-Fuzzy Classifier for Customer Churn Prediction in *International Journal of Computer Applications (0975 – 8887) Volume 19– No.8, April 2011*
70. Baesens, B., Viaene, S., Van den Poel, D., Vanthienen, J., Dedene, G., 2002, Bayesian neural network learning for repeat purchase modelling in direct marketing, *European Journal of Operational Research* 138 (1) 191-211.
71. B. Lariviere and D. Van den Poel: Predicting customer retention and profitability by using random forests and regression forests techniques, *Expert Systems with Applications*, 29(2), 2005, 472-484.
72. Au, W. H., Chan, K.C.C. and Xin Yao(2004) A novel evolutionary data mining algorithm with applications to churn prediction in *Evolutionary Computation*, IEEE Transactions Volume:7 , Issue: 6 pp 532 - 545
73. Van den Poel, D., (2003). "Predicting Mail-Order Repeat Buying: Which Variables Matter?" *Tijdschrift voor Economie and management* 48(3): 371-403.
74. Giudici, P., & Passerone, G. (2002). "Data mining of association structures to model consumer behavior" in *Computational Statistics and Data Analysis*, 38, 533–541.